

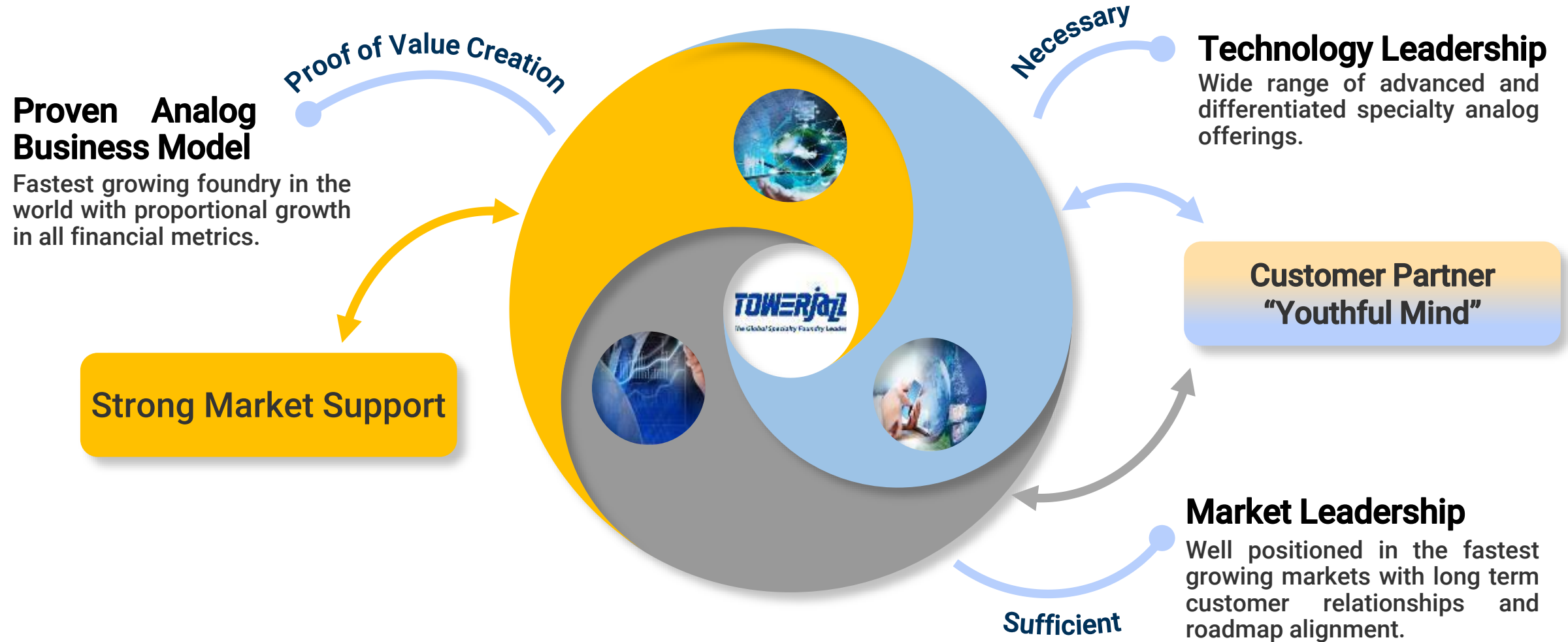


The Global Specialty Foundry Leader

A circular icon with a silver border and a green and blue pixelated pattern inside, representing a microchip or semiconductor.

Business Focus/ Growth Drivers

TowerJazz: The Global Specialty Foundry Leader | Full Circle Value Creation

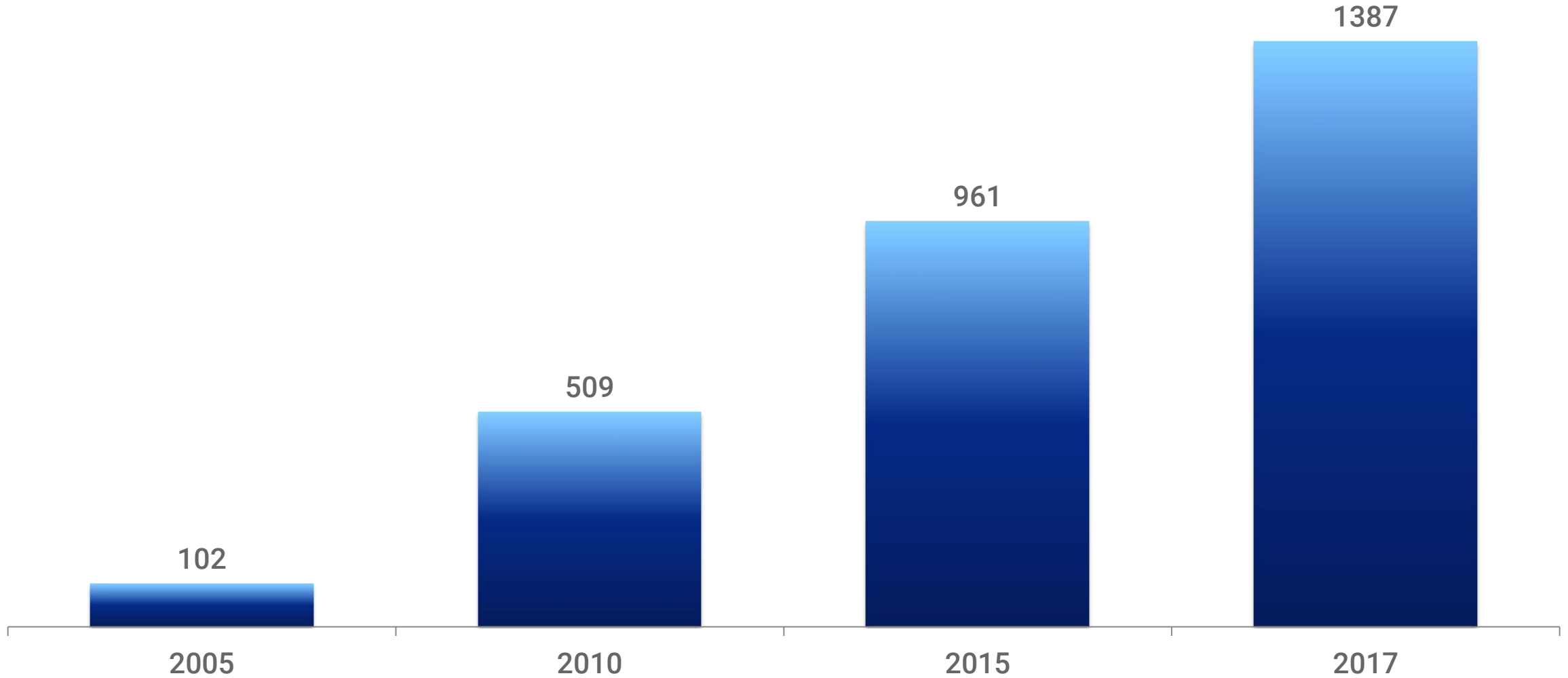


Our focus:

Create value through customer partnership

1. Protecting and growing high-end share of presently served markets
2. Organically increase into growing new served markets
3. Acquire technologies with capacity or a large raw capacity, to enter new served markets where organic development and/ or CapEx investment would not create ROI.

Annual Revenues \$M - 5-year tracking till today



**Protecting and growing high-end
share of presently served markets**

Market Mega Trends

Resulting in rapid growth in specialty analog applications

Wireless Everything

Seamless Connectivity



Green Everything

Energy Efficiency



Smart Everything

Interactive Smart Systems



**Radio Frequency and
High Precision Analog**

~30%

of corporate revenues

Power

~30%

of corporate revenues

Sensors

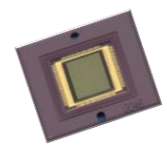
~15%

of corporate revenues

Protecting and growing high-end share of presently served markets

- **Intrinsic to our analog model is CapEx re-use for advanced technologies**
 - Power discrete:
 - Strong partnerships with Infineon, Vishay, Semtech, On Semi– where we run and/ or co-developed flows which are kept behind a firewall on long-term, captive agreements
 - CAGR 9,5,3 years: 17%, 19%, 21%
 - Image sensors:
 - 200mm smallest global shutter pixel in the world for high growth industrial sensors
 - 200mm BSI partnership in China as a bridge to next generation family of sensors
 - Continued growth in our 200mm major market share dental x-ray activities
 - Ramping 300mm single die per wafer medical sensors to augment already high market share 200mm larger area dental
 - Protecting high market share of studio cameras with transition to 300mm
 - DSLR and large sensor mirrorless: partnering with tier-1 for next generation camera (evolutionary) and a specific G+2 revolutionary performance
 - CAGR 9,5,3 years: 19%, 19%, 23%

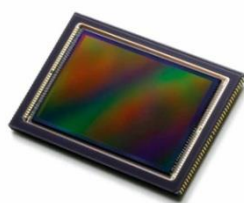
CIS Application Range



12" wafer size

Medical (X-ray)

Industrial,
Machine Vision,
Bar-Code



Professional
Photography



Prosumer
Photography

Medical (X-ray)
Studio & High End Photography
Large Industrial, Scientific, Space

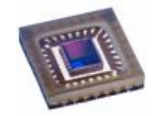
8" wafer size

6" Wafer Size

48x36

645

Consumer



Small Medical



TowerJazz Addressed CIS Markets

Automotive



ADAS and
Autonomous
driving

Industrial / Machine Vision



2D barcode reader
Traffic control
Industrial QA
Food automation

Medical



Intra-oral
Extra Oral
Mammography
Surgery
C-Arm and Flouro

High end photography and Cinematography



Cinematography
High end DSLR
Mirror less (ILC)

3D, Gesture control, AR/VR



Gesture control
Augmented Reality
Virtual Reality

Security



City safety
Borders camera
House safety

Protecting and growing high-end share of presently served markets

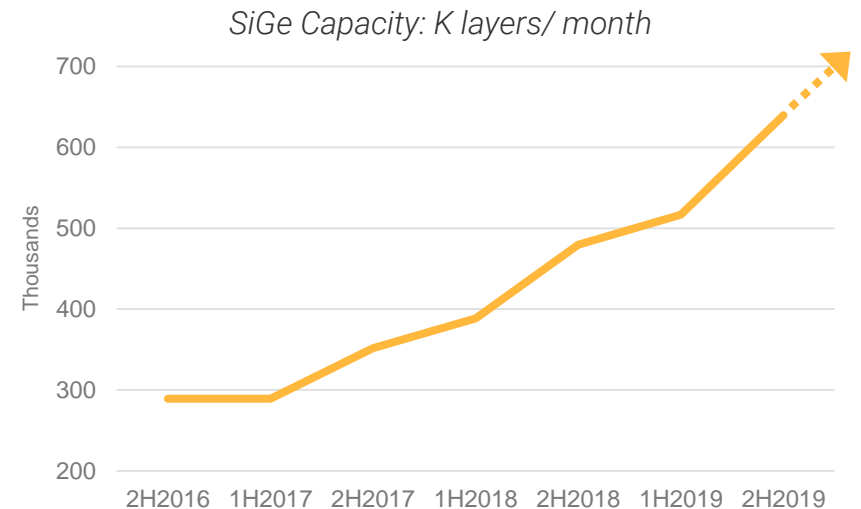
– RF mobile

- Continue high end RF SOI roadmap
 - 300mm 65nm sub 95fsec RonCoff with high digital capability (e.g. switch LNA combo): ramping presently
 - 200mm QT8 and QT9 high power: multiple tier-1 engagements
- Breakthrough RonCoff MEMS switch (partnering with Cavendish Kinetics)
- New materials with game changing RonCoff: tier-1 FEM provider partnership
- CAGR 9,5,3 years: 12%, 34%, 3%

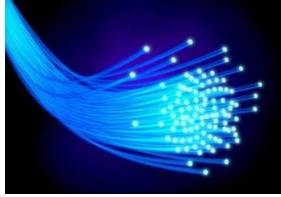


– RF Infrastructure

- SiGe multi generations capacity increase
 - Press released supply relationships with Broadcom, Inphi, MACOM, Maxim, Maxlinear and Semtech, among others
- CAGR 9,5,3 years: 11%, 12%, 18%



RF HPA Applications and Technology



Wireline Front-Ends

High Performance SiGe

- Optical Fiber Networks
- TIA, LA, Laser Drivers, CDRs
- Photodetectors, Photonics



mmWave

High Performance SiGe

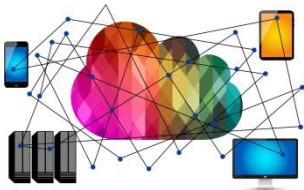
- Automotive Radar
- 5G Wireless
- 60GHz WiFi and Backhaul



Wireless Front-Ends

RF SOI and SiGe

- Power Amplifiers
- Antenna Switch
- Low Noise Amplifiers



High Performance Analog

Complementary BiCMOS

- DSL Line Drivers
- HDD PreAmp for the Cloud
- OpAmps, DAC, ADC

Protecting and growing high-end share of presently served markets

– Power Management

- Best in world up to 16V 300mm 65nm BCD platform
- Incorporating 1.2V to enable high gate count logic to the otherwise best in the world flow
- Adding high voltage offering of up to 140V breakdown to the 0.18um BCD platform
- Adding advanced reprogrammable NVM to our 0.18um BCD platform
- CAGR 9,5,3 years: 29%, 16%, 8%

Computers & Servers



Consumer



Automotive



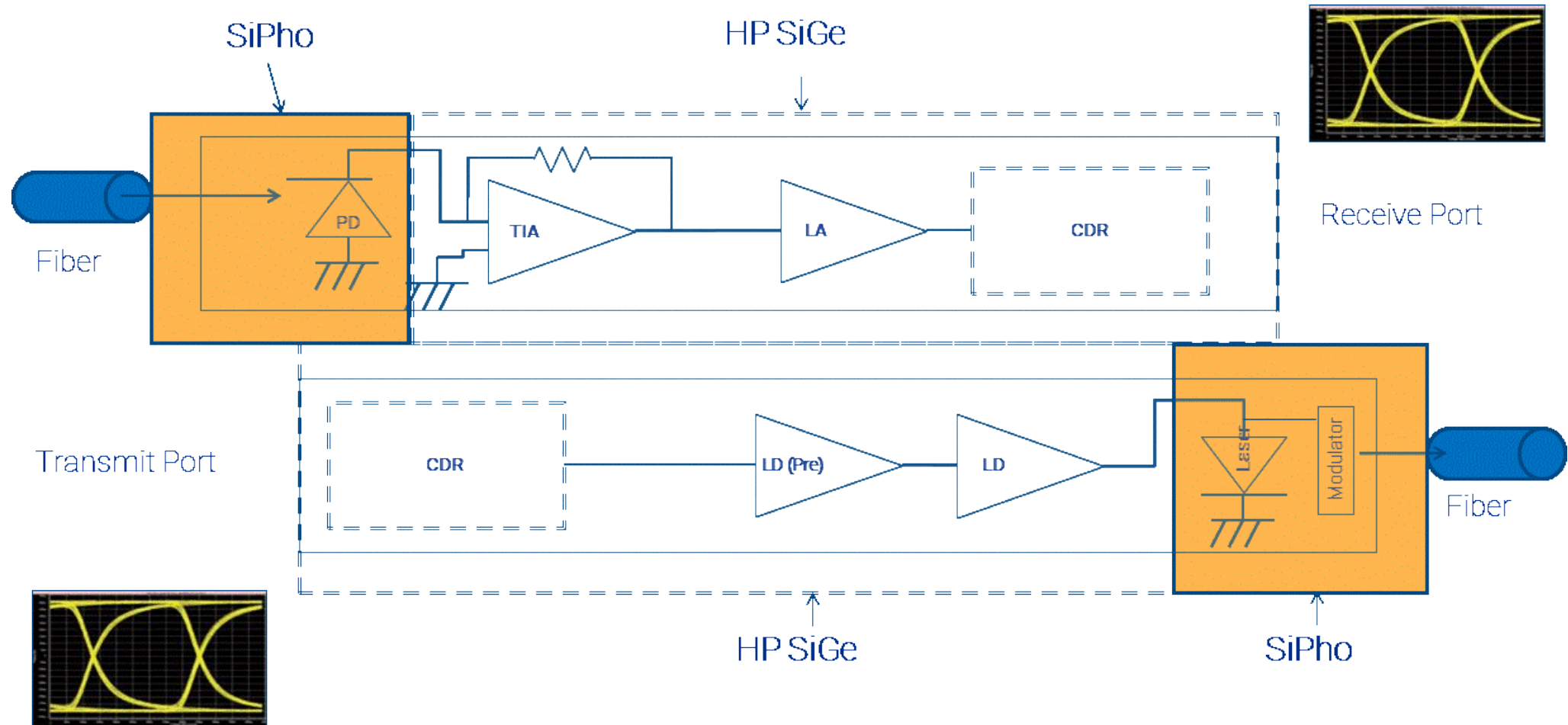
Industrial



**Organically increase into growing new
served markets**

Organically increase into growing new adjacent served markets

- RF infrastructure: SiPho



Organically increase into growing new served markets

New Superordinate “Mega” Trends Requiring Enhanced Sensing

Artificial Intelligence

Experiencing the World Differently



Augmented Reality & Virtual Reality

Creating Alternative Reality



Automotive & Autonomous Driving

The sensor fusion experience



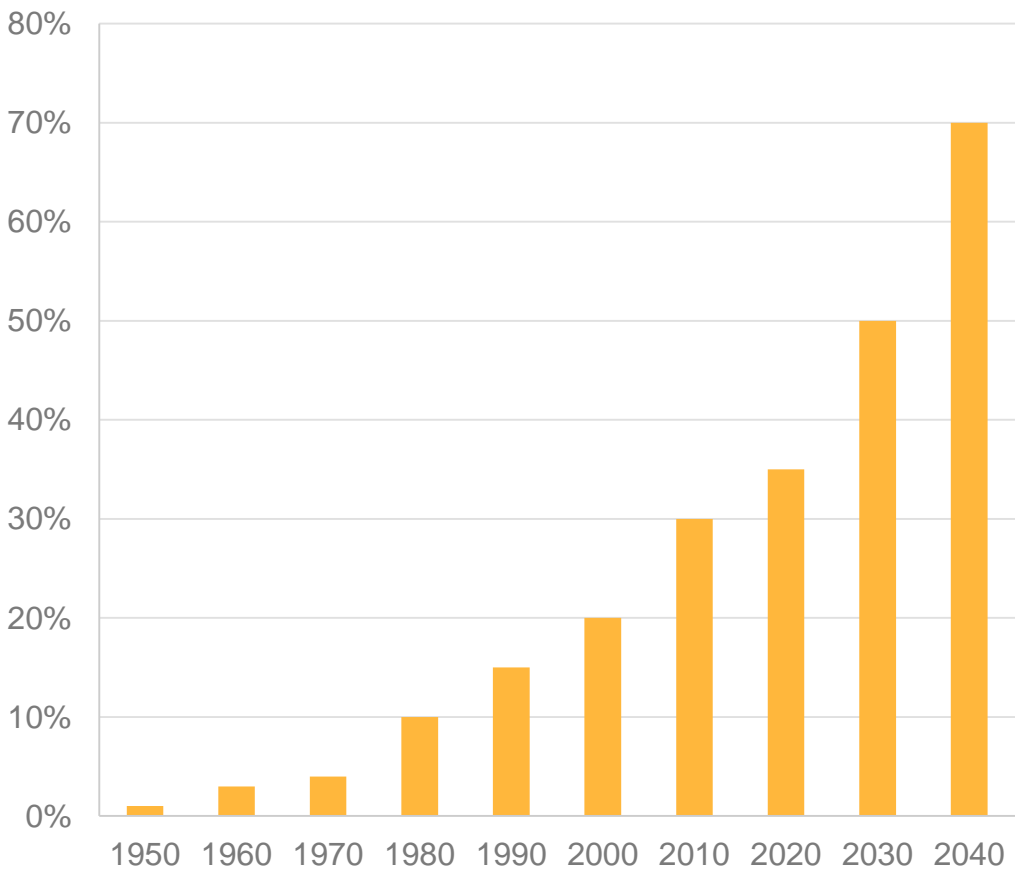
The background of the slide is a blue-tinted photograph of a car, likely a sedan, shown from a side-front perspective. Overlaid on the image are several digital and sensor-related graphics: concentric white circles emanating from the front of the car, suggesting a sensor's range; a grid of white lines; and vertical columns of binary code (0s and 1s) on the left side. The overall aesthetic is high-tech and futuristic.

Automotive & Autonomous Driving

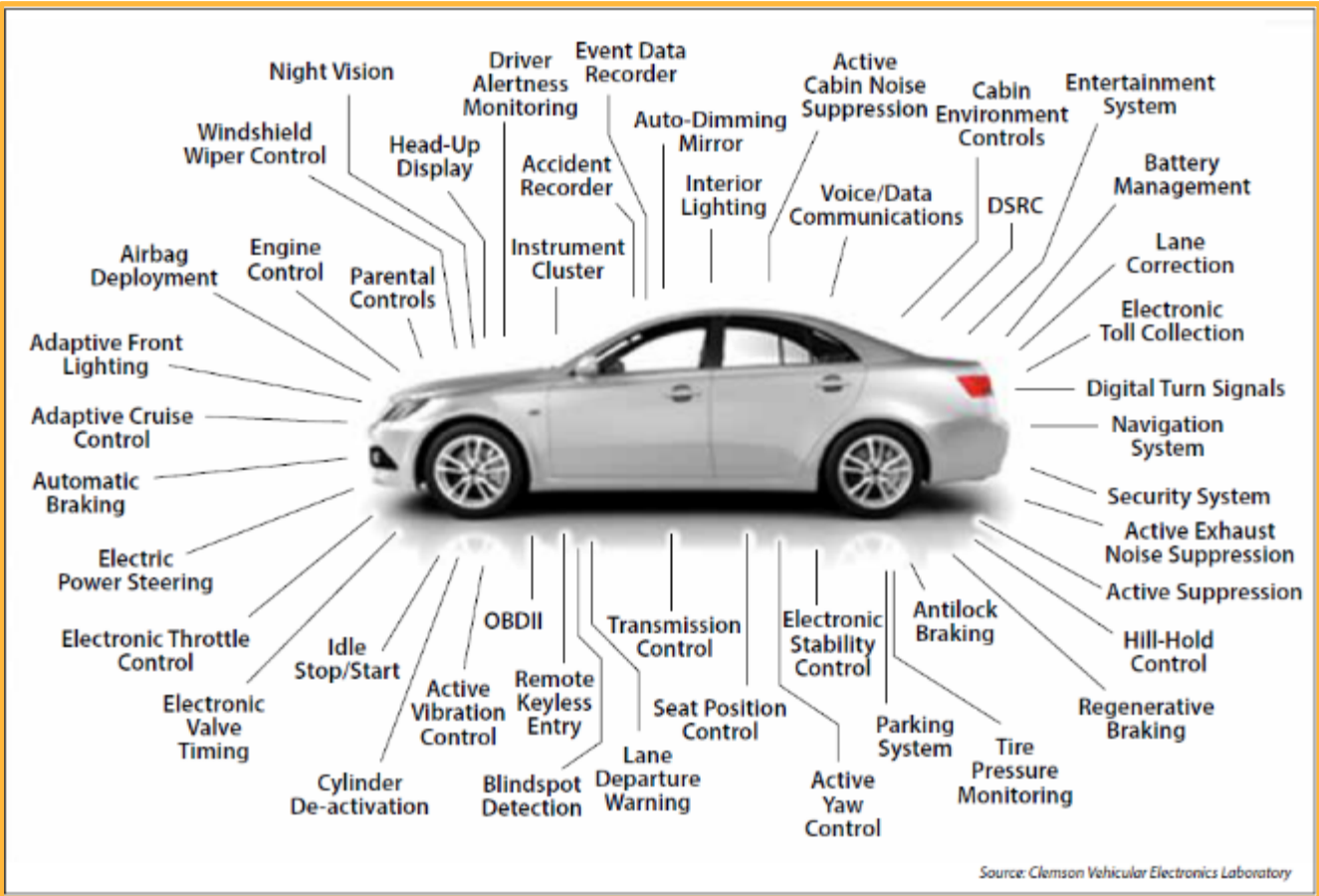
The Sensor Fusion
Experience

Digitization of the automobile is driving rapid growth in electronic content

Electronics as % of Cost in an Automobile

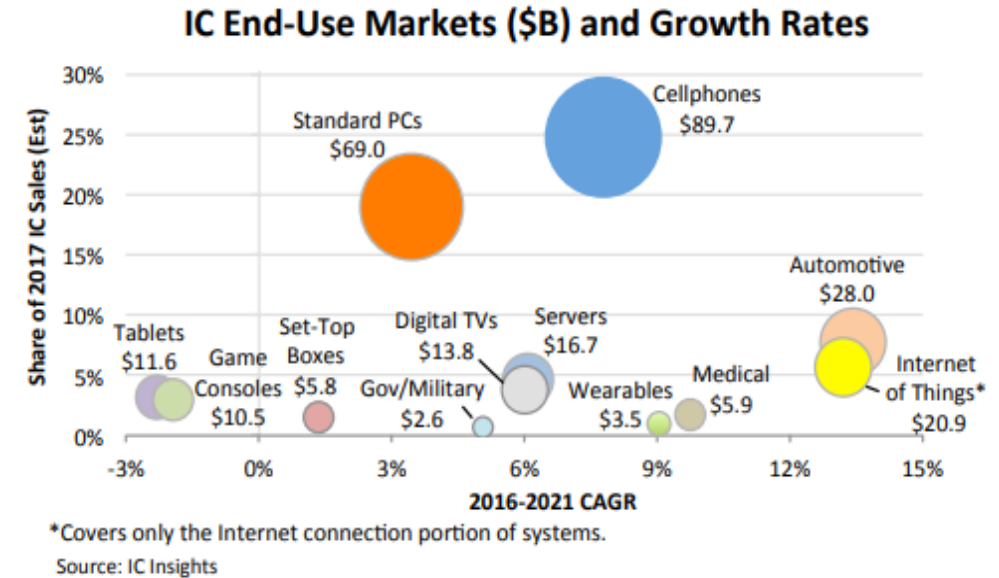


Automotive Electronics Systems



Automotive Market Focus

- Automotive is the **fastest growing** and the **third largest** end-use IC market
- Nearly **70%** of Automotive IC content is **Analog***, well aligned to TowerJazz Specialty Analog technologies
 - **Power** for EV/Hybrid battery management
 - **RF** for connectivity and Radar (Example: Denso/Toyota partnership announced)
 - **Sensors** for ADAS (Example: FLIR IR night vision partnership announced)

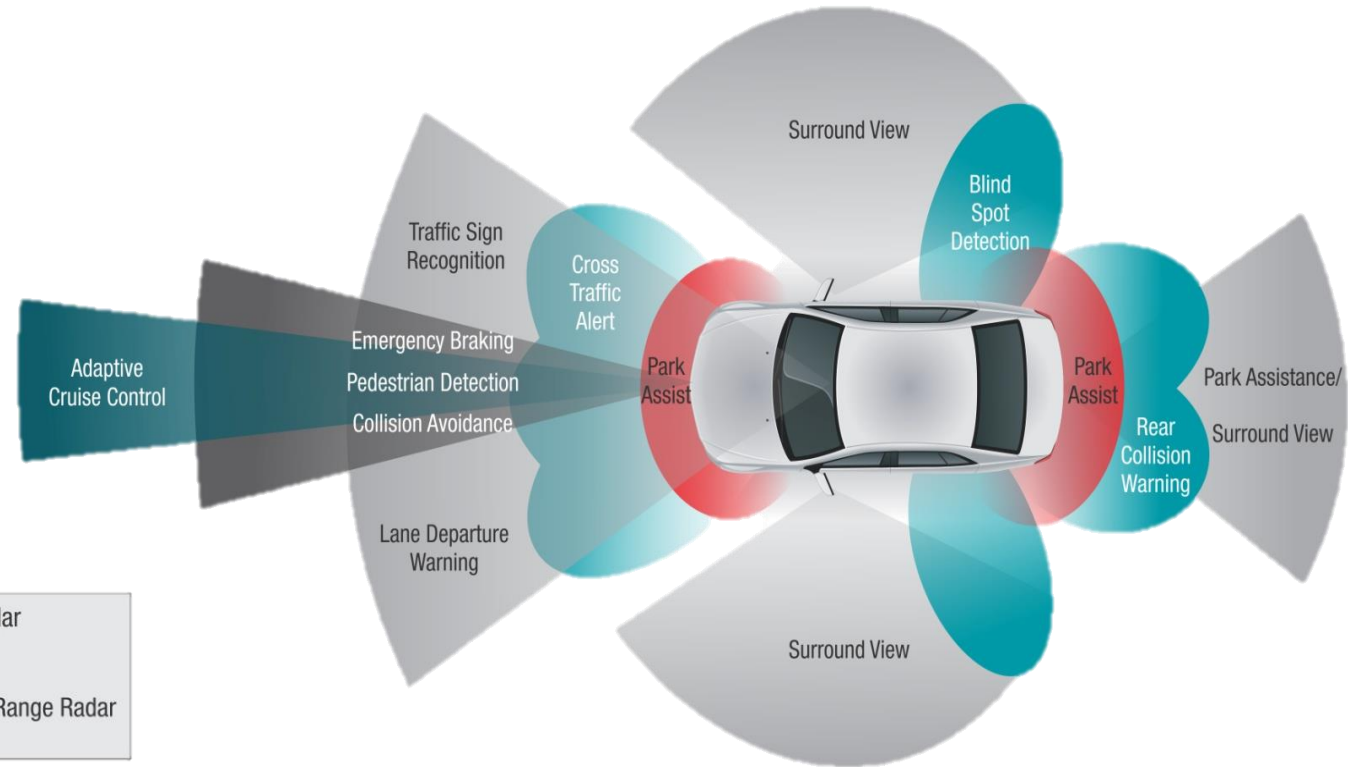
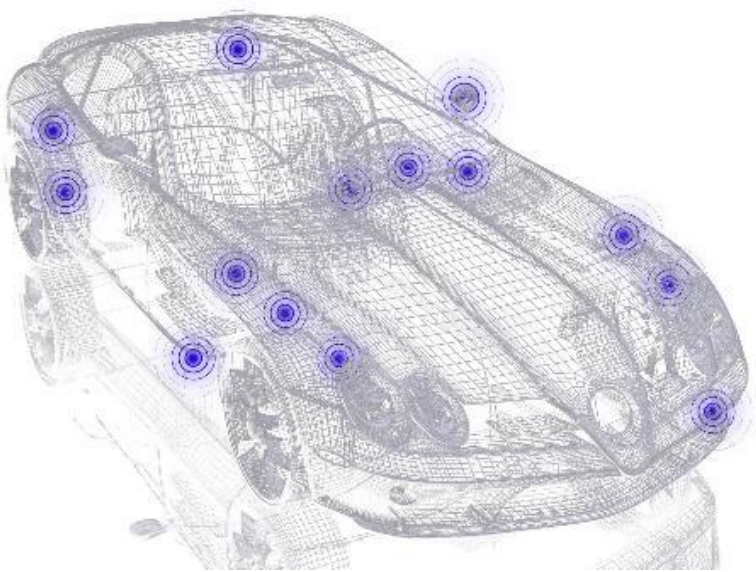


* MarketsandMarkets report 2017

Autonomous and Advanced Driver Assistance Systems (ADAS)

360° coverage required | 6-8 cameras per car | VGA moving to HD | High Dynamic Range | Near IR vision | LIDAR for accurate ranging

“TowerJazz’s leading SiGe technology enabled us to create the collision avoidance system which is our flagship offering. TowerJazz’s advanced process enabled the engineers to fully achieve the challenging specs required for next generation short range radar (SRR) for automotive applications. This solution allows DENSO to be a world leader in supplying collision avoidance systems for automotive safety.” (Denso, Director, Advanced Safety Engineering)



“We chose TowerJazz for its advanced pixel technology, specially customized for our CMOS image sensor chips addressing very high volume markets. Together with our technology, we were able to demonstrate a 4X better sensitivity to our customers. TowerJazz’s CIS offering is proven in the industry and we are pleased to manufacture locally in Israel with a leader in the global analog foundry space.” (Newsight Imaging, CEO).

Organically increase into growing new served markets

New Superordinate “Mega” Trends Requiring Enhanced Sensing

Artificial Intelligence

Experiencing the World Differently



Augmented Reality & Virtual Reality

Creating Alternative Reality



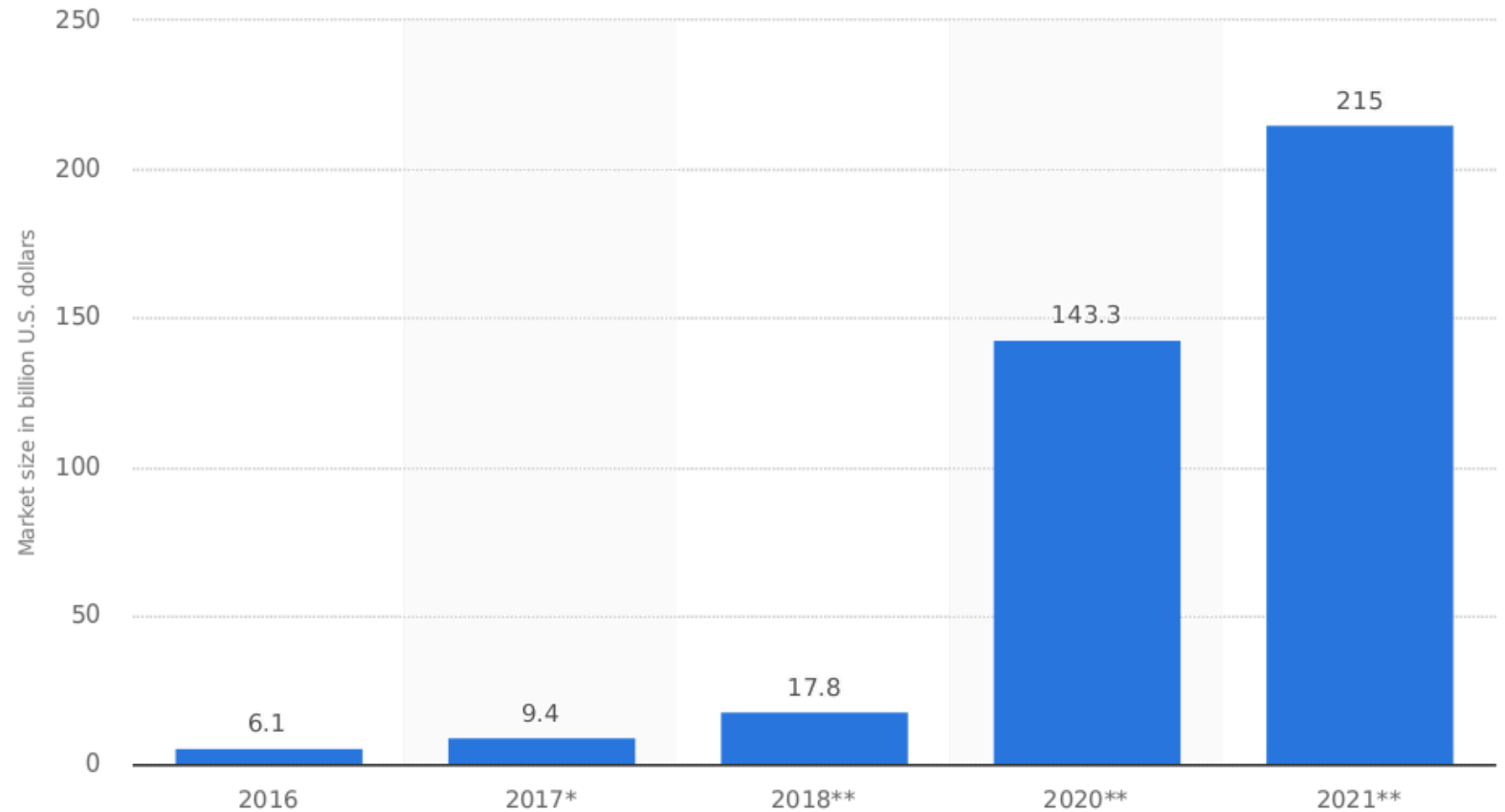
Automotive & Autonomous Driving

The sensor fusion experience



AR and VR Worldwide Market Size 2016-2021 (\$B)

8X growth
in the next 2 years



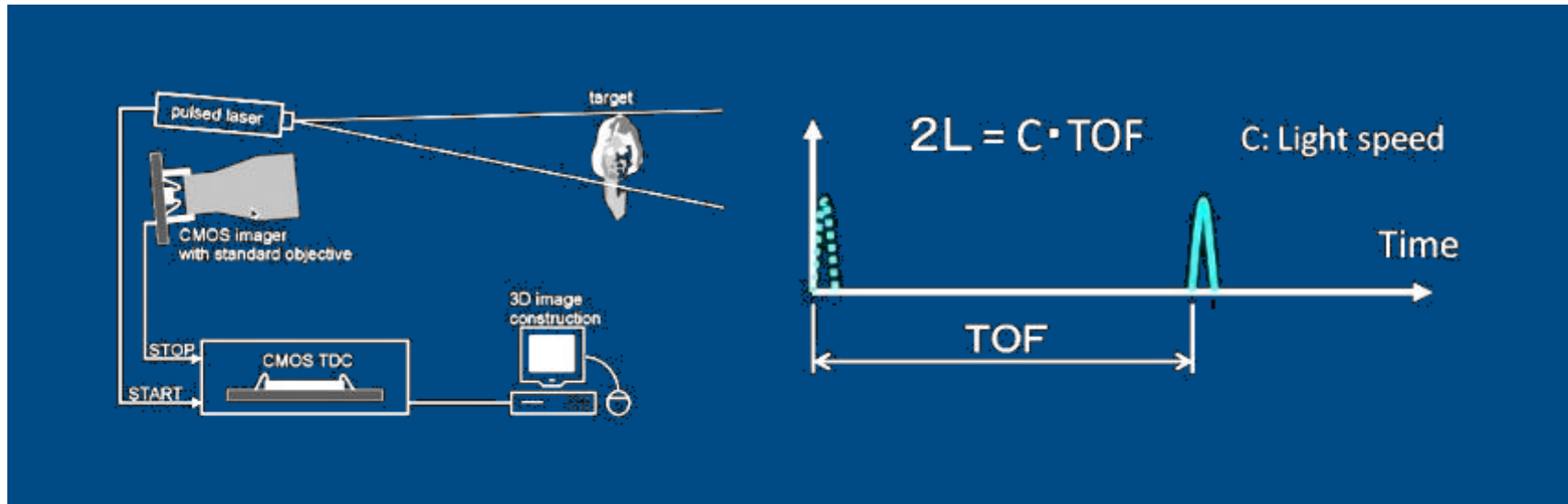
Source
IDC

Additional Information:
Worldwide; IDC; November 2017

AR/VR – 3D ToF sensors and OLED on Silicon displays

Time of Flight Sensing

- Simple idea: measure the time it takes for light to return from the object
- Two detection mechanisms that trade off between speed and SNR
 - Active Gating: Ultrafast Global shutter technology for real-time imaging, but lower SNR
 - Single photon Avalanche diode (SPAD): Highest SNR but relatively slower due to “quenching” required



Organically increase into growing new served markets

New Superordinate “Mega” Trends Requiring Enhanced Sensing

Artificial Intelligence

Experiencing the World Differently



Augmented Reality & Virtual Reality

Creating Alternative Reality

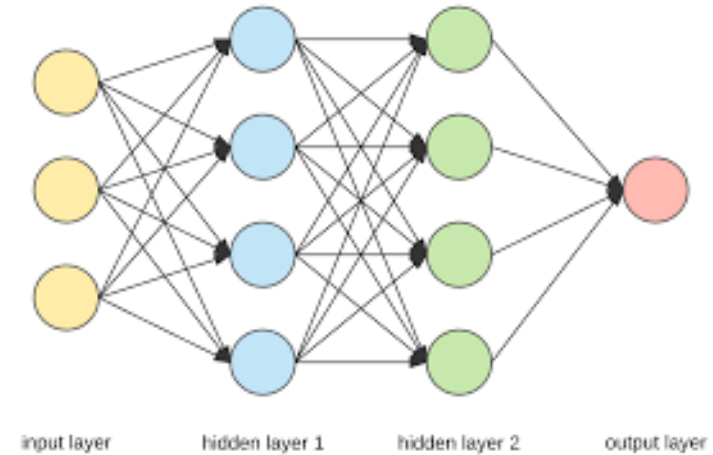
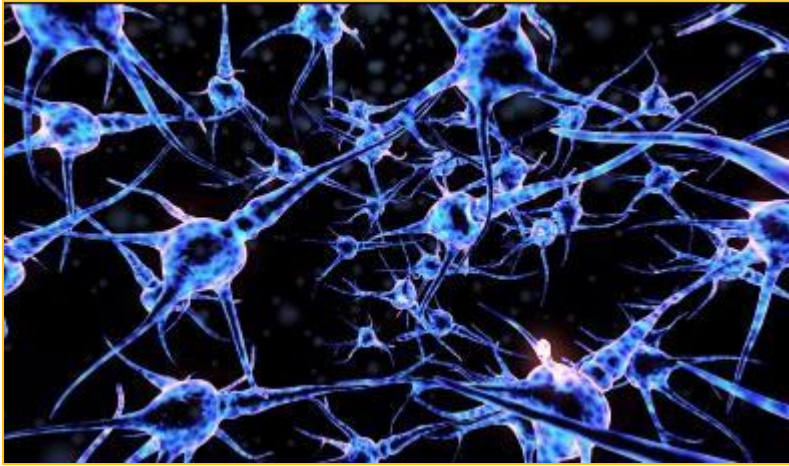


Automotive & Autonomous Driving

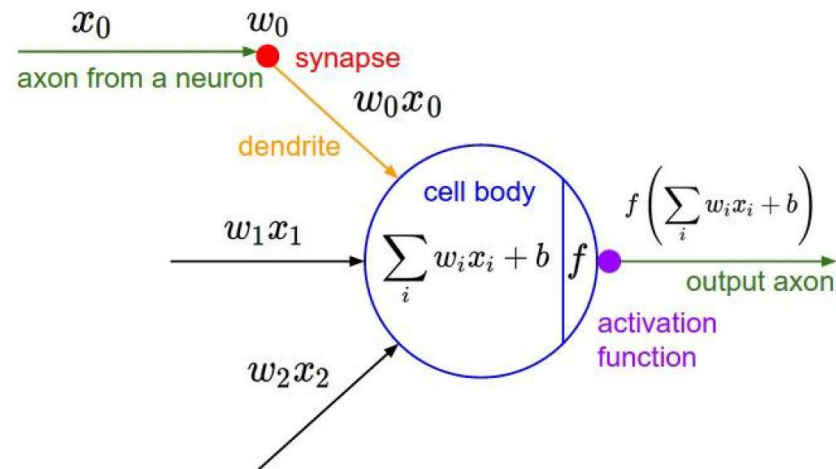
The sensor fusion experience



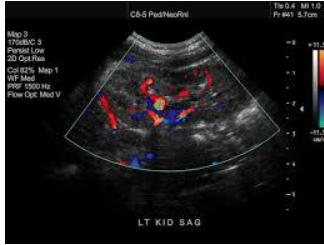
Analog Neural Network AI processor based on CIS pixels as Neurons



Neuron is a mixed-signal device
Axon is an analog device



The Opportunity: Emerging Applications need low power analog AI



AI Medical



Personal Assistants



Virtual Reality



Portable Navigation



Radar & Optical Gesture Control



Augmented Transportation



Robotics



Drones



Wearables



Insurance



Smart City Sensors



AlaaS



Security/
Authentication

**Acquire technologies with capacity or a large
raw capacity, to enter new served markets
where organic development and/ or CapEx
investment would not create ROI**

Partnerships and M&A Strategy

■ Increase Operational Capacity and Flexibility

- Acquiring capacity at substantial lower cost than organic growth, coupled with long-term supply agreement
- Green field, predominantly funded by partners

■ Increase Served Market and Technology Offering

- Acquire new technologies w/ established customer base
- Acquire new technologies which serves existing base
- Acquire existing foundry (manufacturing and business)
- Green field predominantly funded by partners

Target Acquisitions

High-end technology
outside of present
portfolio

Low cost, regional
focused capacity
expansion

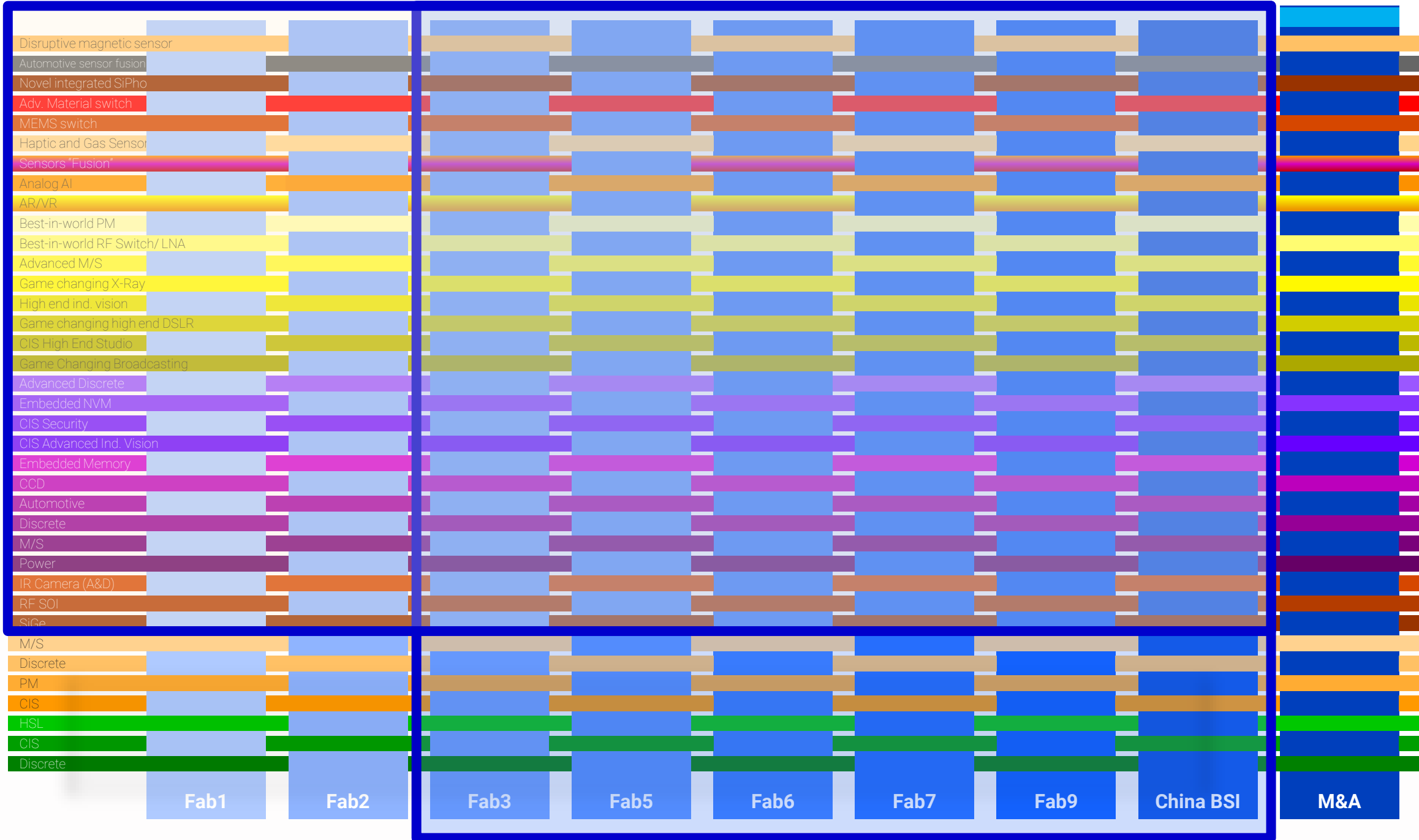
Under-valued, high
revenue asset
acquisition

A song that greatly impacted my life and relevance to TowerJazz

- Tapestry (1972, Carole King)
 - When I was 17 years old; The lyrics touched me deeply, “How do I create a tapestry of my life?”

*“My life has been a tapestry of rich and royal hue,
An everlasting vision of the ever-changing view
A wondrous woven magic in bits of blue and gold
A tapestry to feel and see, impossible to hold.”*





TOWERjazz

www.towerjazz.com